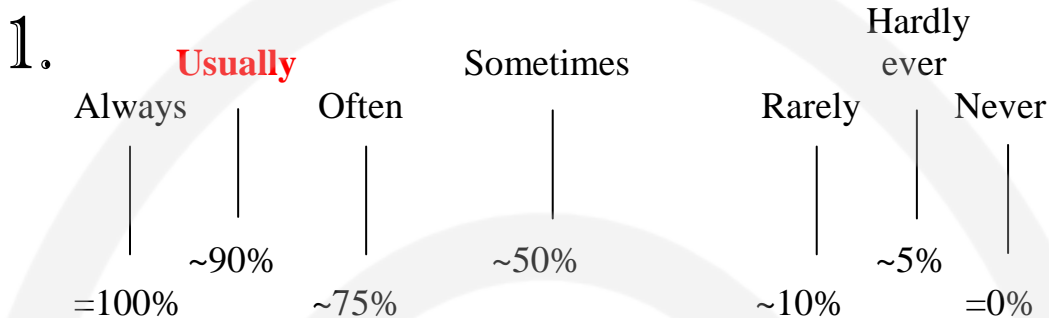




I usually
wake up at
7:00 in the morning.





2. Matching — 左の質問の答えとして適切なものを右から選び線でつなぎましょう。

What do you usually do after school?

I usually have lunch with my friends.

When do you usually wake up?

I usually come here by bicycle.

Where do you usually eat dinner?

I usually do club activities.

Who do you usually have lunch with?

I usually wake up at 7:00 a.m.

How do you usually come here?

I usually eat dinner at home.

3. **Questions** — 下のフレーズを使って、“What / When / Where / Who / How + do you usually + 動詞...?” の質問を作ってみましょう。自分なりに考えたオリジナルの質問も作ってみましょう。



1. What _____

2. When _____

3. Where _____

4. Who _____

5. How _____

4. How often do you...?

How often do you go to a restaurant?

Once (1x) or twice (2x) a month. (詳しく言う場合)



How often do you exercise?

Often / Hardly ever / Never. (おおまかに言う場合)

下の表を自分に当てはめてチェックしましょう。次に、ペアになってパートナーに質問してみましょう。同じ答えはいくつありましたか？

| How often do you... | Every day. | Once or twice (a week). | Sometimes. | Hardly ever. | Never. |
|------------------------|------------|-------------------------|------------|--------------|--------|
| 1 go to the movies? | | | | | |
| 2 eat Italian food? | | | | | |
| 3 e-mail your friends? | | | | | |
| 4 go to a hot spring? | | | | | |
| 5 go shopping? | | | | | |
| 6 go to karaoke? | | | | | |
| 7 eat rice balls? | | | | | |
| 8 read a newspaper? | | | | | |
| 9 do sports? | | | | | |

5. Conversation:

1. What does Wendy do after work?
2. How often does she do that?
3. What does Lisa do after work?
4. Where does she go?

Lisa — What do you usually do after work, Wendy?

Wendy — I usually go to the gym.

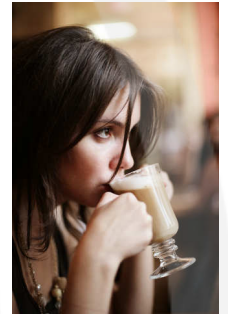
Lisa — How often do you do that?

Wendy — Four days a week. On Fridays,
I usually work late. What about you?

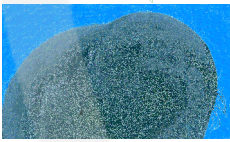
Lisa — I sometimes get some hot chocolate.

Wendy — Where do you go?

Lisa — I usually go to a cafe near my office.



Composition and Speech



(_____)の中に always, usually, often, sometimes のいずれかを当てはめ、自分の日頃のスケジュールを書いてみましょう。次に、グループになって個々のスケジュールを読み、比較してみましょう。それが終わったら、各グループの代表は、一人のスケジュールを名前を公表せずに、クラスの前で発表してみましょう。クラスみんなは、それが誰のスケジュールなのかを予想してみましょう。

I (_____) wake up at _____. After I get up, I _____ . I (_____) come to school _____ (by bike / by train / by bus / on foot). At lunch, I (_____) _____. After school, I (_____) _____. I (_____) get home at _____. Then, I (_____) _____. After dinner, I (_____) _____. I (_____) go to bed at _____ .

6a.

Have you ever eaten Korean food?
(韓国料理を食べた事がありますか?)



比べて

Yes, I have. / No, I haven't.
(あります。 / ありません。)

Do you ever eat Korean food?
(韓国料理を食べる事がありますか?)

Yes, I sometimes do. / No, I hardly ever do.
(たまにあります。 / めったにありません。)

Do you ever wake up before 6:00 a.m.?

Yes, I (always) do.

(usually / often / sometimes)



Do you ever eat fish for breakfast?

No, I (rarely) do.

(hardly ever / never)



6b.

先生やクラスメイトに聞いてみましょう :

Getting to know your teacher and classmates:



Do you ever...

watch American TV?

come to school by car?

bring a lunch box to school?

have coffee at night?

go to sleep after 1:00 a.m.?

go to the movies alone?

go to the gym?

listen to FM radio?

do sports?

have a midnight snack?

take a nap at lunch?

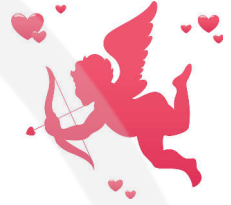
go bowling?

go to a restaurant for breakfast?

listen to classical music or jazz?

Valentine's Day

7. February 14 is Valentine's Day, the holiday of love. Many countries such as Canada, Mexico, England, France and Japan celebrate this day. In America, boys give chocolate or flowers (usually red or pink roses) to girls but sometimes, girls give small gifts to boys, too. In addition, people often write Valentine's Day cards or *Valentines* to each other. At night, couples go out to dinner. Most restaurants are usually packed and the waiting time to get a table is sometimes two hours. The question, "Will you be my valentine?" is a very special question. It usually means that you like the other person a lot.



10

Questions:

1. What is the difference between Valentine's Day in America and Valentine's Day in Japan? In Japan, _____

2. Do Japanese people ever write Valentines? Yes, we do. / No, we don't.
3. Do Japanese people usually go out to dinner on Valentine's Day?
Yes, we (often / usually) do. / No, we (rarely / never) do. / I'm not sure.
4. Are restaurants usually crowded on Valentine's Day?
Yes, they are. / No, they aren't.
5. When are restaurants very crowded in Japan? _____
6. What do people usually do on White Day in Japan? _____

7. What kind of chocolate do you like? I like _____

